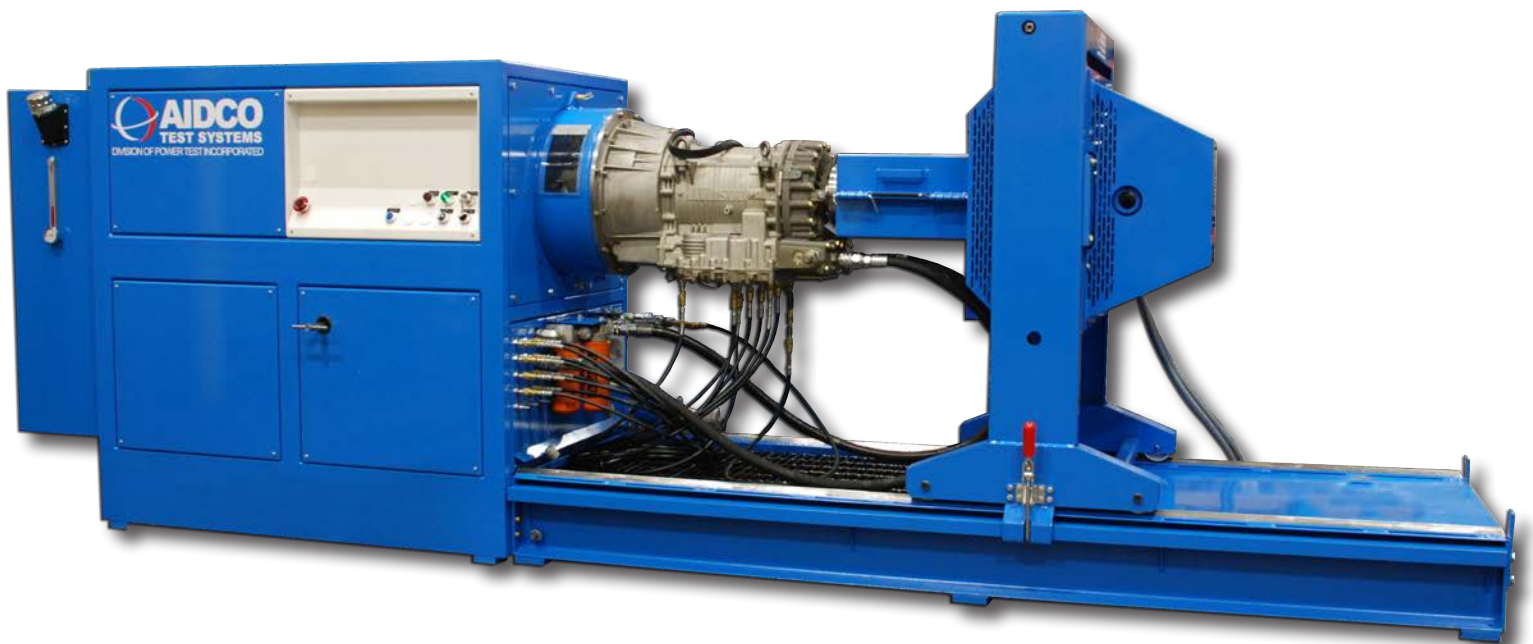


MODEL 450E TRANSMISSION TEST STAND



Model 450E Transmission Test Stand

The 450E is designed for testing all automatic and power shift transmissions used in commercial applications built by Allison and other OEM transmission manufacturers.

Based on the popular Model 450 Transmission Test Stand, the 450E provides the same testing capabilities of the 450 without the use of a hydrostatic drive system. The result of continuous development of AIDCO transmission test equipment. This progressively engineered, quiet, compact system keeps vehicle downtime to a minimum by greatly reducing critical failures on the road or in the field. In most cases, performance testing on this machine will eliminate the cost of additional disassembly and repair for rebuilt or serviced components.

Perform all of the following tests:

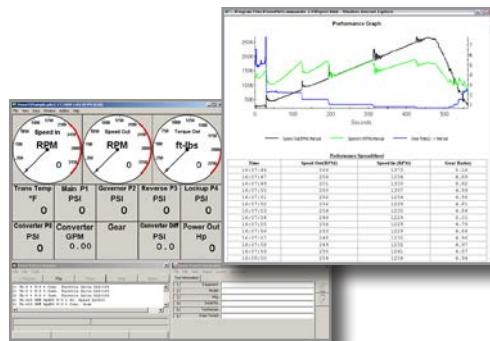
- Check shift points (automatic)
- Set shift points (automatic)
- Full and closed throttle upshift and downshift test (loaded or unloaded)
- Downshift inhibitor test
- Measure output torque (stall test)
- Locate shaft seal leaks
- Identify clutch leakage
- Check noise/vibration
- Detect mechanical binding
- Check main, clutch and converter pressure
- Monitor converter flow and temperature
- Determine converter inlet and outlet pressure

PowerNet TD Data Acquisition and Control System is available for all AIDCO Transmission, and Hydraulic Test Stands

Based on the popular PowerNet series of data acquisition and control systems, PowerNet TD is designed to provide a comprehensive, easy to use data acquisition and control system for all AIDCO customers. PowerNet TD utilizes a Windows-based computerized data acquisition system to monitor and record speeds, torque, pressures, temperatures, flow rates and shift events.

In addition to advanced monitoring and recording, PowerNet TD enables AIDCO users to run an automated test procedure for electronically controlled transmissions. This not only ensures consistent repeatability of test procedures, but provides a record of performance parameters exhibited during a test.

Designed for ease of use, PowerNet TD allows for easy configuration of instrumentation, operator designated warnings for High/Low limits, and operator customized full-feature data reports. All reports are generated in a standardized HTML format.



Features

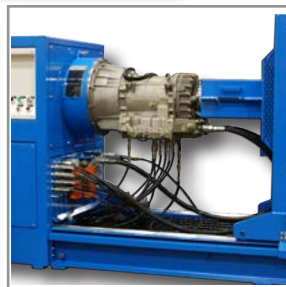
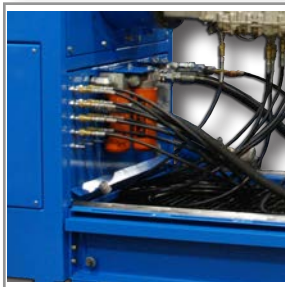


Enclosed indexing assembly allows for safe, rapid rotation of transmission under test. Power indexing available.

Splined input allows for quick positioning and takes the guesswork out of alignment.

Transmissions with SAE #1 flange mount directly to the 450E. Adapter rings are available for other SAE sizes.

Conveniently placed filters and taps for pressure monitoring reduce the chance of spillage.



The eddy current absorber can be maneuvered horizontally and vertically and locks into position.

Output adapter to a standard drive shaft results in fast, simple, quiet connection to load unit.

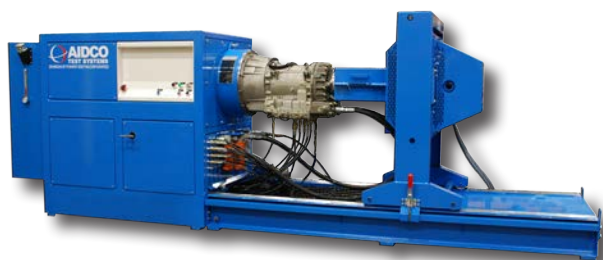
Stall bar testing for measuring the amount of output torque. Optional Remote Stall Kit available.

Available Power Lift allows for rapid height adjustment.



Model 450E Specifications

Electric Motor	450-150 150HP (112 kW) 1,755 rpm (60 Hz) 450-200 200HP (147 kW) 1,755 rpm (60 Hz) 450-300 300HP (320 kW) 1,755 rpm (60 Hz) Inverter Duty: 460V/60 Hz, 380V/50 Hz 3-Phase
Max. Transmission Input Torque (continuous)	450-150 450 lb.-ft. (610 Nm) at 1,755 rpm 450-200 598 lb.-ft. (811 Nm) at 1,755 rpm 450-300 897 lb.-ft. (1,216 Nm) at 1,755 rpm
Max. Transmission Input Speed	4,000 rpm (bi-directional)
Converter Flow Monitoring Circuit	Manual control for differential pressure adjust (backpressure). Heat exchanger with digital temperature controller. Available gauge package allows for in-cell monitoring.
Eddy Current Absorber	Continuous braking torque 525 ft. lbs. (712 Nm) Intermittent braking torque 1,470 ft. lbs. (1,993 Nm) Max. stall torque (with stall bar) 2000 ft. lbs. (2712 Nm) Maximum rpm: 3,000 Rotation: bi-directional
Worktable Sump	Capacity: 100 gallons (378 L) Fill Pump w/filter standard
Dimensions (with worktable)	W 178 inches (452 cm) H 63 inches (160 cm) D 48 inches (122 cm)
Weight	Weight with work table: Approximately 6,000 lbs. (3175 kg)
Adapters available to test the following popular transmissions (additional OEMs available)	Allison: 1000/2000 Series; MD 3000 (B300, B400); HD 4000 (B500); AT 500/ MT 600/HT 700 Series; V730, V731 Series GM: 3L80E; 4L80E Voith ZF



In addition to the Model 450E Transmission Test Stand, AIDCO manufactures a wide range of transmission testing equipment, including electronic shift consoles, valve body test stands, and hydraulic test stands.

AIDCO TEST SYSTEMS - a division of Power Test Incorporated

N60 W22700 SILVER SPRING DRIVE SUSSEX, WI 53089 USA

phone: (262)252-5030 fax: (262)246-0436

www.aidcots.com